

Designed for 3.3kV~10kV application
Screw compressor dedicated to
R134a, R22, R407C, R404A, R507

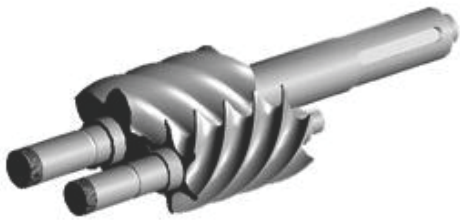
High-Voltage Model RC2 Series Screw Compressor



Highlights of RC2 High Voltage Compressor

Wide Range of High Voltage Applications

- Dedicated design for high-voltage power requirements
60Hz: 3300V, 4160V, 6600V
50Hz: 6000V, 10000V
- Suitable for low amperage applications or use in power plant



High-efficiency Screw Rotor Profile

- 5-to-6 rotor profile patented in Taiwan, US, UK & China
- Designed according to characteristics of refrigerants
- High volumetric efficiency and minimum clearance

Dual Capacity Control

- Flanged-on solenoid coil easy for installation
- 4-step or continuous (1270: 25%~100% / 1530:30%~100%) capacity control system
- Interchangeable by varying control logic without changing solenoid valves.

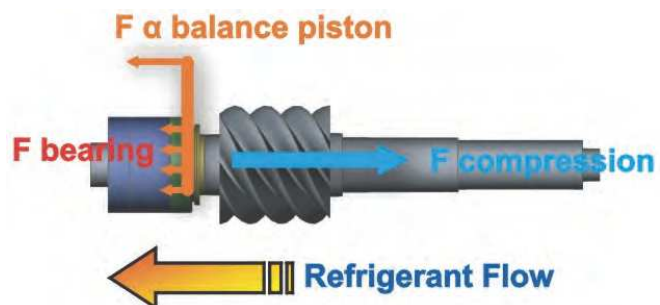


High-performance Integral Oil Separator

- Detachable demister for cleaning
- Optimized mesh of demister
- Low pressure drop and oil carry-over
- Three-staged oil separation

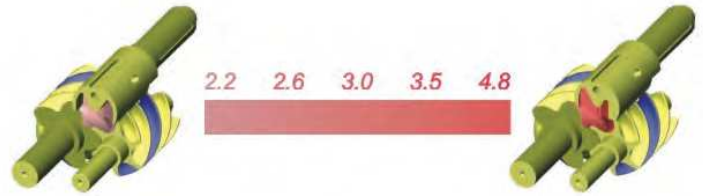
Durable Bearing Structure

- High-quality bearings (radial and axial resistance)
- Additional two bearings for backward rotation
- α balance piston against axial thrust
- Heavy-duty design



Wide VI Selection

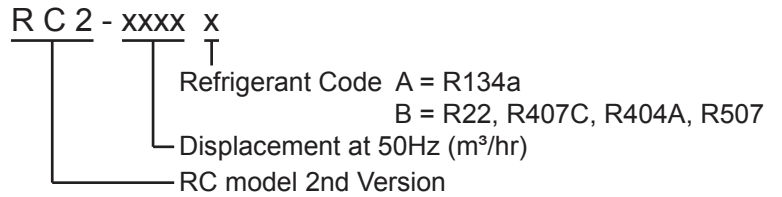
- Built-in volume ratio (VI)-2.2, 2.6, 3.0, 3.5, 4.8
- Exactly match pressure ratio without over- or under-compression
- Suitable for various applications like refrigeration, water-cooled chiller, air-cooled chiller and heat pump



Other Advantages

- Low noise level and low vibration
- Easy maintenance and overhaul
- Compact design and easy system layout

Compressor Nomenclature



MODEL	COMPRESSOR					MOTOR							Hydrostatic Pressure Test kg/cm ² g	WEIGHT kg	
	Displacement 60 / 50Hz m ³ /hr	Rated Speed 60 / 50Hz	VI	Cap. Control (%)		Type	Nominal Hp		Starting	Voltage (V)		Insulation			Protection
				STEP	STEPLESS		60Hz	50Hz		60Hz	50Hz				
RC2-1270A	1521/1268	3550/2950	2.2	25,50,75,100	25~100	3 Phase, 2 Pole, Squirrel Cage, Induction Motor	286	238	DOL	3300 4160 6600	6000 10000	Class F	PTC Protection	42	2450
RC2-1530A	1847/1539		4.8	30,50,75,100	30~100		331	275							2550
RC2-1270B	1521/1268	2.2	25,50,75,100	25~100	471		392	2600							
RC2-1530B	1847/1539	4.8	30,50,75,100	30~100	534		443	2700							

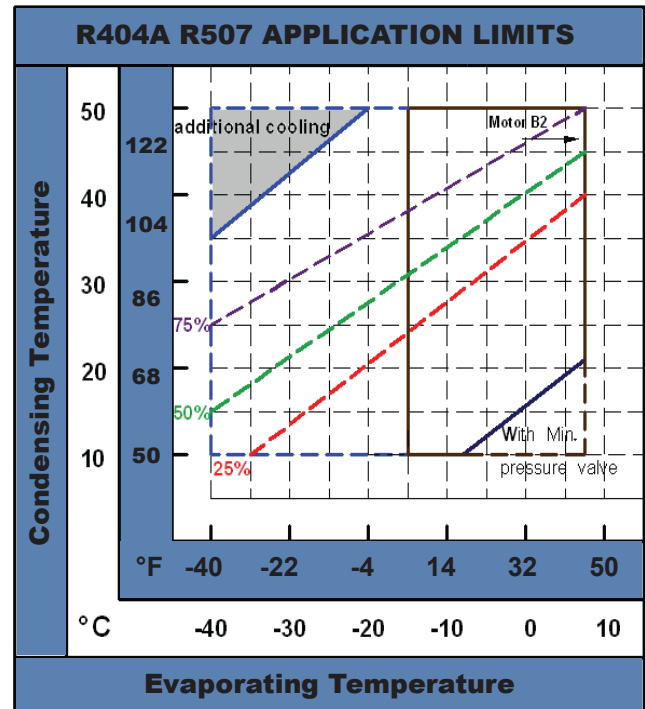
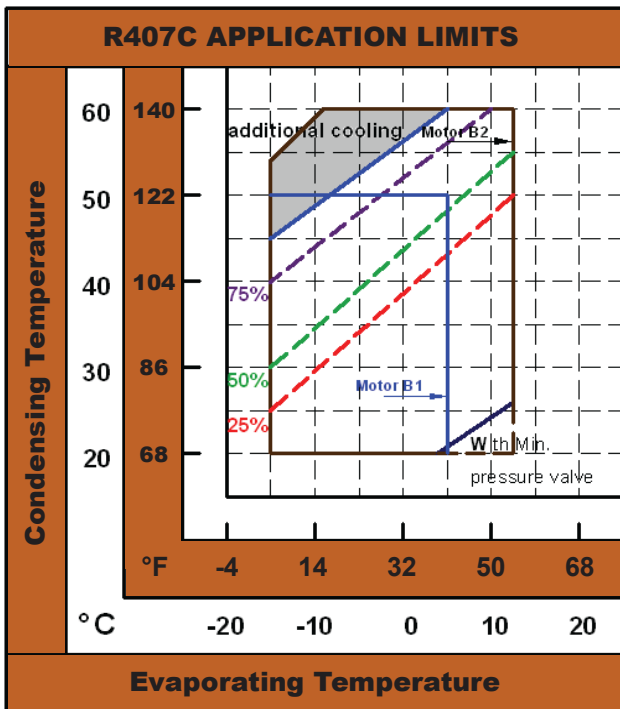
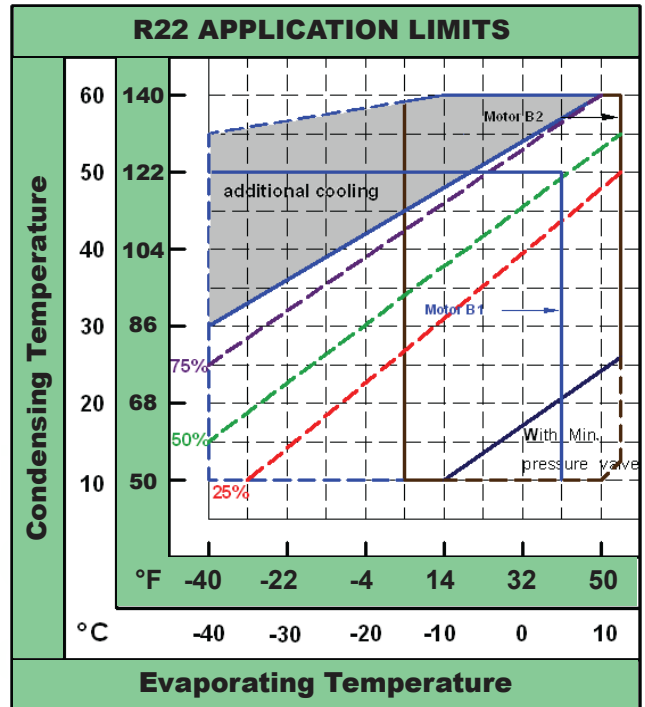
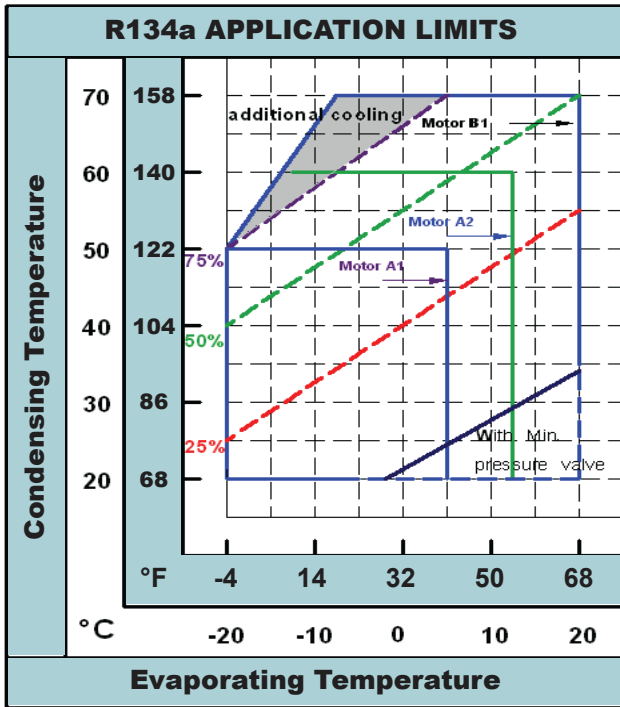
Outline drawings

No.	Name	Note	No.	Name	Note
1	Angle valve	1/4"Flare	17	Oil cooler connector(in)	3/4"Flare
2	Safety valve	1 1/4",option	18	Oil flow sight glass	
3	Discharge flange	5"	19	Service eyebolt hole	M30
4	Economizer port	2 1/8", solder	20	Stop Pin	option
5	Solenoid valve	Stepless(NC or NO),option	21	Oil cooler connector(out)	3/4"Flare
6	Solenoid valve	25%(NC)	22	Suction flange	8"
7	Solenoid valve	50%(NC)	23	Angle valve	1/4"Flare
8	Solenoid valve	75%(NC)	24	Angle valve	1/4"Flare
9	Eyebolt	M30	25	Discharge temp. sensor	110°C
10	Displacement indicator	Option	26	Refrigerant service valve	1/4"Flare
11	Oil or Liquid refrigerant injection connector	5/8"Flare	27	Cable box	Standard
12	Oil sight glass	High side	28	service flange	
13	Oil sight glass	Low side	29	Oil level switch	
14	Oil equalization valve	1/2"Flare,option	30	Oil drain valve	1/4"Flare
15	Oil filter cartridge		31	Oil heater	300W
16	oil pressure differential switch connector,option		32	Controller cable box	

Unit:
SI:mm Imperial:(in)

Model	RC2-1270/1530
Name	Compressor outline
	HANBELL NO. C1

Application Limits



SHANGHAI HANBELL PRECISE MACHINERY CO., LTD

No.8289, Tingfeng RD, Fengjing Area, JinShan District, Shanghai
 TEL:+86-21-57350280 FAX:+86-21-57352004
 http://www.shahanbell.com.cn
 E-mail:sales@shahanbell.com

CONG TY THNN MAY CHINH XAC HANBELL VIET NAM

LO 28-30-32 DUONG SO 11, KHU CONG NGHIEP TAN DUC, XA HUU THANH, HUYEN DUC HOA TINH LONG AN.
 TEL: (072) 3769688 FAX: (072) 3769690

HANBELL PRECISE MACHINERY CO., LTD.

NO.5 Kongsan Road, Kuan-Yin Industrial Park, Kuan-Yin Shiang, Tao-Yuan Hsien, Taiwan, R.O.C.
 TEL:+886-3-4836215
 FAX:+886-3-4836223
 http://www.hanbell.com.cn
 E-mail:sales@hanbell.com

HANBELL EUROPE

Via dei Campazzi 25 / 27, 21040 Gerenzano Varese, Italia
 TEL:+39-02-962-80188
 FAX:+39-02-962-48011
 http://www.comer-srl.com
 E-mail:COMefe30@YEN.191.it
 E-mail:vincentyen@hanbell.com
 E-mail:michelletseng@hanbell.com



HBCE-HV-12-A(500)